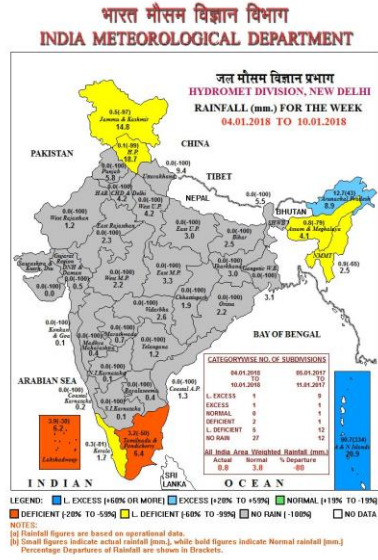


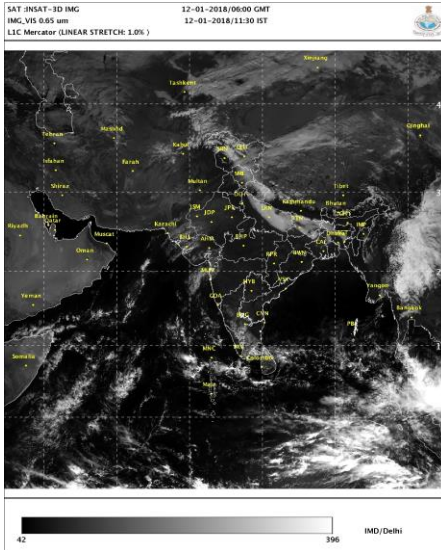
Inputs for Krishi Darshan, New Delhi dated 12.01.2018

Rainfall map for the week ending 10.01.2018



- ◆ Large Excess Rain: Andaman & Nicobar Islands
- ◆ Excess Rain: Arunachal Pradesh
- ◆ Normal Rain: NIL
- ◆ Rainfall was Deficient / Low Deficient / Dry: Rest of the country.

Satellite image 0600 UTC Dated 12.01.2018



Weather Forecast for next 5 days valid upto 0830 hours of 17th January, 2018

- Meteorological subdivision wise detailed 5 days rainfall forecast is given in Table below.
- Northeast monsoon rainfall is likely to cease over Tamilnadu & Puducherry, Kerala and adjoining parts of Andhra Pradesh and Karnataka from 15 January, 2018.
- No significant change in minimum temperatures is likely over northwest, central, east & northeast India during next 3 days.
- Shallow to moderate fog during late night & morning hours very likely over Punjab, Haryana, Chandigarh & Delhi, north Rajasthan and lower parts of Himachal Pradesh and Uttarakhand during next 24 hours.

5 Day Rainfall Forecast (Mid day) 12th January, 2018

| Met-Sub-Division | 12-Jan Today | 13Jan Sat | 14Jan Sun | 15Jan Mon | 16Jan Tue |
|------------------------------|-----------------|--------------|--------------|--------------|--------------|
| 1. Andaman & Nicobar Islands | ISOL | ISOL | ISOL | ISOL | SCT |
| 2. Arunachal Pradesh | DRY | ISOL | ISOL | SCT | DRY |
| 3. Assam & Meghalaya | DRY | DRY | DRY | ISOL | DRY |
| 4. N. M. M. & T. | DRY | DRY | DRY | ISOL | DRY |
| 5. S.H. West Bengal & Sikkim | DRY | DRY | ISOL | ISOL | DRY |
| 6. Gangetic West Bengal | DRY | DRY | DRY | DRY | DRY |
| 7. Odisha | DRY | DRY | DRY | DRY | DRY |
| 8. Jharkhand | DRY | DRY | DRY | DRY | DRY |
| 9. Bihar | DRY | DRY | DRY | DRY | DRY |
| 10. East Uttar Pradesh | DRY | DRY | DRY | DRY | DRY |
| 11. West Uttar Pradesh | DRY | DRY | DRY | DRY | DRY |
| 12. Uttarakhand | ISOL | DRY | DRY | DRY | DRY |
| 13. Haryana, Chd & Delhi | DRY | DRY | DRY | DRY | DRY |
| 14. Punjab | DRY | DRY | DRY | DRY | DRY |
| 15. Himachal Pradesh | ISOL | DRY | DRY | DRY | DRY |
| 16. Jammu & Kashmir | ISOL | DRY | ISOL | DRY | DRY |
| 17. West Rajsthan | DRY | DRY | DRY | DRY | DRY |
| 18. East Rajasthan | DRY | DRY | DRY | DRY | DRY |
| 19. West Madhya Pradesh | DRY | DRY | DRY | DRY | DRY |
| 20. East Madhya Pradesh | DRY | DRY | DRY | DRY | DRY |
| 21. Gujarat Region | DRY | DRY | DRY | DRY | DRY |
| 22. Saurashtra & Kutch | DRY | DRY | DRY | DRY | DRY |
| 23. Konkan & Goa | DRY | DRY | DRY | DRY | DRY |
| 24. Madhya Maharashtra | DRY | DRY | DRY | DRY | DRY |
| 25. Marathawada | DRY | DRY | DRY | DRY | DRY |
| 26. Vidharbha | DRY | DRY | DRY | DRY | DRY |
| 27. Chhattisgarh | DRY | DRY | DRY | DRY | DRY |
| 28. Coastal Andhra Pradesh | DRY | DRY | DRY | DRY | DRY |
| 29. Telangana | DRY | DRY | DRY | DRY | DRY |
| 30. Rayalaseema | DRY | DRY | DRY | DRY | DRY |
| 31. Tamilnadu & Puducherry | ISOL | ISOL | DRY | DRY | DRY |
| 32. Coastal Karnataka | DRY | DRY | DRY | DRY | DRY |
| 33. North Interior Karnataka | DRY | DRY | DRY | DRY | DRY |
| 34. South Interior Karnataka | DRY | DRY | DRY | DRY | DRY |
| 35. Kerala | ISOL | ISOL | DRY | DRY | DRY |
| 36. Lakshadweep | ISOL | ISOL | DRY | DRY | DRY |

% Station Reporting Rainfall

| % Stations | Category | % Stations | Category |
|------------|-------------------------------------|------------|-------------------------------|
| 76-100 | Widespread (WS/Most Places) | 26-50 | Scattered (SCT/ A Few Places) |
| 51-75 | Fairly Widespred (FWS/ Many Places) | 1-25 | Isolated (ISOL) |
| No Rain | Dry | | |

Weather Warning during next 5 days

- **12 January (Day 1):** Dense fog at many places with very dense at a few places very likely over East Uttar Pradesh; dense fog at a few places with very dense at isolated places over Bihar; dense to very dense fog at isolated places over West Uttar Pradesh, Sub-Himalayan West Bengal & Sikkim and Assam & Meghalaya, Nagaland, Manipur, Mizoram & Tripura and dense fog at a isolated places over lower regions of Himachal Pradesh, Uttarakhand and Northern parts of Punjab, Haryana & Chandigarh, Gangetic West Bengal and Coastal Odisha.
- Cold wave to severe cold wave conditions at isolated places very likely over north Rajasthan; Cold wave at isolated places over Interior Odisha, Bihar, Uttar Pradesh, Himachal Pradesh, Uttarakhand, Punjab and Haryana, Chandigarh & Delhi; Cold day to severe cold day conditions at many places very likely Bihar; at a few places over East Uttar Pradesh, northwest Uttar Pradesh and Sub-Himalayan West Bengal; at isolated places over lower regions of Uttarakhand; Ground frost conditions at isolated places very likely over Jammu & Kashmir, Himachal Pradesh & Uttarakhand and north Rajasthan.
- **13 January (Day 2):** Dense fog at many places with very dense at a few places very likely over East Uttar Pradesh; dense fog at a few places with very dense at isolated places over Bihar; dense to very dense fog at isolated places over West Uttar Pradesh, Sub-Himalayan West Bengal and dense fog at a isolated places over Assam & Meghalaya, Nagaland Manipur Mizoram & Tripura, West Bengal, lower regions of Himachal Pradesh, Uttarakhand and Northern parts of Punjab, Haryana & Chandigarh, Gangetic West Bengal and Coastal Odisha;
- Cold wave to severe cold wave conditions at isolated places very likely over north Rajasthan; Cold wave at isolated places over Interior Odisha, Bihar, Uttar Pradesh, Himachal Pradesh, Uttarakhand, Jammu & Kashmir, Punjab and Haryana, Chandigarh & Delhi; Cold day to severe cold day conditions at many places very likely over Bihar; at a few places over East Uttar Pradesh, northwest Uttar Pradesh and Sub-Himalayan West Bengal; at isolated places over lower regions of Uttarakhand; Ground frost conditions at isolated places very likely over Jammu & Kashmir, Himachal Pradesh & Uttarakhand and north Rajasthan.
- **14 January (Day 3):** Dense fog at many places with very dense at a few places very likely over East Uttar Pradesh; dense fog at a few places with very dense at isolated places over Bihar; dense to very dense fog at isolated places over West Uttar Pradesh, Sub-Himalayan West Bengal and dense fog at a isolated places over Assam & Meghalaya, Nagaland Manipur Mizoram & Tripura, West Bengal, lower regions of Himachal Pradesh, Uttarakhand and Northern parts of Punjab, Haryana & Chandigarh, Gangetic West Bengal and Coastal Odisha;
- Cold wave to severe cold wave conditions at isolated places very likely over north Rajasthan; Cold wave at isolated places over Telangana, Uttar Pradesh, Himachal Pradesh, Uttarakhand, Jammu & Kashmir, Punjab and Haryana, Chandigarh & Delhi; Cold day to severe cold day conditions at many places very likely over Bihar; at a few places over East Uttar Pradesh, northwest Uttar Pradesh and Sub-Himalayan West Bengal; at isolated places over lower region of Uttarakhand; Ground frost conditions at isolated places very likely over Jammu & Kashmir, Himachal Pradesh & Uttarakhand and north Rajasthan.
- **15 January (Day 4):** Dense fog at a few places with very dense at isolated places likely over East Uttar Pradesh and Bihar; dense fog at a few places with very dense at isolated places over East Uttar Pradesh and Bihar; dense to very dense fog at isolated places over Sub-Himalayan West Bengal and dense fog at isolated places over Assam & Meghalaya, Nagaland Manipur Mizoram & Tripura, West Uttar Pradesh, lower regions of Himachal Pradesh, Uttarakhand and Northern parts of Punjab, Haryana & Chandigarh, Gangetic West Bengal and Coastal Odisha.
- Cold wave conditions at isolated places likely over Telangana, Cold day to severe cold day conditions at many places very likely Bihar; at a few places over East Uttar Pradesh, northwest Uttar Pradesh and Sub-Himalayan West Bengal & Sikkim; at isolated places over lower region of Uttarakhand.
- **16 January (Day 5):** Dense fog at a few places with very dense at isolated places likely over East Uttar Pradesh and Bihar; dense fog at a few places with very dense at isolated places over East Uttar Pradesh and Bihar; dense to very dense fog at isolated places over Sub-Himalayan West Bengal and dense fog at a isolated places over Assam & Meghalaya, Nagaland Manipur Mizoram & Tripura, West Uttar Pradesh, West Bengal, lower region of Himachal Pradesh, Uttarakhand and Northern parts of Punjab, Haryana & Chandigarh, Gangetic West Bengal and Coastal Odisha; Cold day to severe cold day conditions at many places very likely Bihar; at a few places over East Uttar Pradesh, northwest Uttar Pradesh and Sub-Himalayan West Bengal; at isolated places over lower region of Uttarakhand.

Weather Outlook for subsequent 2 days from 17th to 19th January 2018

- Another Western Disturbance is likely to affect parts of northwest India from 17th January.

- Isolated rainfall activity likely over Andaman & Nicobar Islands.
- Weather likely to be dry over remaining parts of the country.

Executive Summary

- As cold wave to severe cold wave conditions very likely at isolated places over **north Rajasthan** from 12th to 14th, cold wave conditions very likely at isolated places over **Uttar Pradesh, Himachal Pradesh, Uttarakhand, Punjab and Haryana, Chandigarh & Delhi** from 12th to 14th and over **Jammu & Kashmir** on 13th and 14th, over **Interior Odisha and Bihar** on 12th and 13th and over **Telangana** on 14th and 15th January, apply light and frequent irrigation/sprinkler irrigation in the evening to protect the crops from cold injury. To protect young fruit plants from chilly winds, cover young fruit plants with straw/polythene sheets/gunny bags. Cover the rice nursery beds with straw/ polythene sheets during night hours and remove in the morning. Irrigate the nursery bed every day in the evening and let out the water in the morning.
- As ground frost conditions very likely at isolated places over **Jammu & Kashmir, Himachal Pradesh, Uttarakhand and north Rajasthan** from 12th to 14th January, apply light and frequent irrigation in standing crops during evening hours and in cash crops, spray of 0.1 percent H₂SO₄ to protect from frost injury. In north Rajasthan, to protect sensitive crops like mustard, Rajmash, potato, gram from frost attack, spray dilute Sulphuric Acid @ 0.1% (1 litre H₂SO₄ in 1000 litre water) or thiourea @ 500 ppm (500 gm thiourea in 1000 litre water) at flowering stage.
- As dense fog at many/at a few places with very dense fog at isolated places very likely over **East Uttar Pradesh**, dense fog at a few places with very dense at isolated places very likely over **Bihar** during the period, dense to very dense fog at isolated places very likely over **Sub-Himalayan West Bengal**, dense fog at isolated places very likely over **Gangetic West Bengal** and **Coastal Odisha** during the period, dense to very dense fog at isolated places over **West Uttar Pradesh**, dense fog at isolated places over lower regions of **Himachal Pradesh, Uttarakhand** and Northern parts of **Punjab, Haryana & Chandigarh**, dense to very dense/dense fog very likely at isolated places over **Assam & Meghalaya and Nagaland, Manipur, Mizoram & Tripura** during the period, monitor the standing crops for incidence and spread of pest diseases, tomato and onion crops for early/late blight disease. If symptoms are noticed, undertake plant protection measures.
- In North East Alluvial Zone of **Bihar**, in the prevailing foggy weather, infection of blight may occur in potato. If symptoms appear then spray Carbandizam @ 1.0 gm/litre of water or Dithane-M-45 @ 2 gm/litre of water for control.
- In view of the cold wave conditions in **north Rajasthan, Uttar Pradesh, Punjab, Haryana, Chandigarh & Delhi, Bihar** from 12th to 14th January, keep animals inside the sheds during night and provide dry bedding to protect them from cold. Animals should be given mineral mixture along with salt regularly and wheat grains, jaggery etc. may be provided @ 10%-20% in the daily ration during winter season to meet the energy requirement of the animals, 10% extra dry matter should be provided over and above the total requirement to fulfill the extra energy requirement in winter. In Poultry, keep the chicks warm by providing artificial light in the poultry sheds.

- Weather forecast issued by NWFC, New Delhi and Agromet Advisories prepared based on the DAAS Bulletins issued by different Agrometeorological Field Units are included in this bulletin.