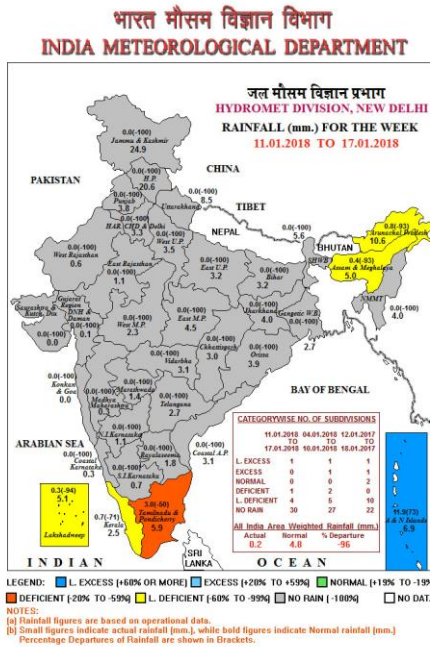


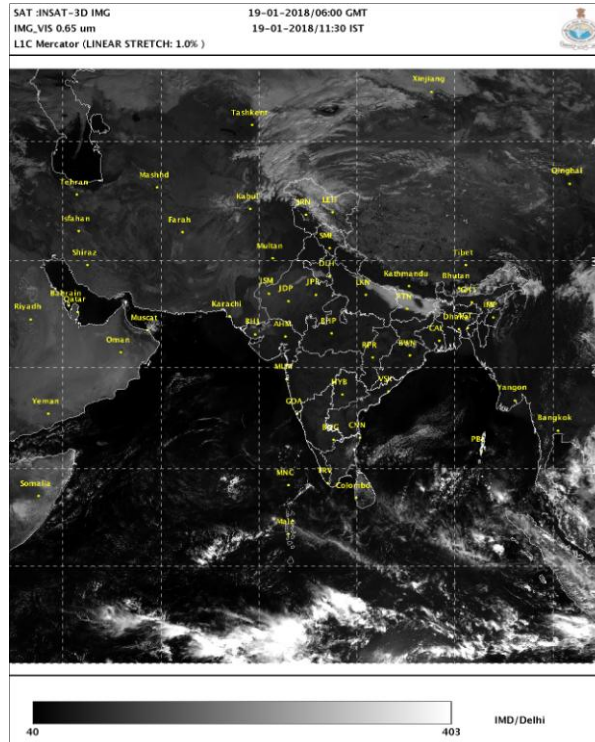
Inputs for Krishi Darshan, New Delhi dated 19.01.2018

Rainfall map for the week ending 17.01.2018



- ◆ **Large Excess Rain:** Andaman & Nicobar Islands
- ◆ **Excess Rain:** NIL
- ◆ **Normal Rain:** NIL
- ◆ **Rainfall was Deficient / Low Deficient / Dry:** Rest of the country.

Satellite image 0600 UTC Dated 19.01.2018



Weather Forecast for next 5 days valid upto 0830 hours of 24th January, 2018

- Meteorological subdivision wise detailed 5 days rainfall forecast is given in Table below.
- No significant change in minimum temperatures is likely over most parts of India during next 3 days.
- Shallow to moderate fog during late night & morning hours very likely over parts of plains of northwest, eastern India and Coastal Andhra Pradesh during next 3 days.

5 Day Rainfall Forecast (Mid day) 19th January, 2018

Met-Sub-Division	19-Jan Today	20Jan Sat	21Jan Sun	22Jan Mon	23Jan Tue
1. Andaman & Nicobar Islands	ISOL	ISOL	SCT	SCT	FWS
2. Arunachal Pradesh	ISOL	ISOL	DRY	DRY	DRY
3. Assam & Meghalaya	ISOL	DRY	DRY	DRY	DRY
4. N. M. M. & T.	DRY	DRY	DRY	DRY	DRY
5. S.H. West Bengal & Sikkim	DRY	DRY	DRY	DRY	DRY
6. Gangetic West Bengal	DRY	DRY	DRY	DRY	DRY
7. Odisha	DRY	DRY	DRY	DRY	DRY
8. Jharkhand	DRY	DRY	DRY	DRY	DRY
9. Bihar	DRY	DRY	DRY	DRY	DRY
10. East Uttar Pradesh	DRY	DRY	DRY	DRY	ISOL
11. West Uttar Pradesh	DRY	DRY	DRY	DRY	SCT
12. Uttarakhand	DRY	DRY	DRY	DRY	SCT
13. Haryana, Chd & Delhi	DRY	DRY	DRY	DRY	SCT
14. Punjab	DRY	DRY	DRY	DRY	SCT
15. Himachal Pradesh	DRY	DRY	DRY	DRY	ISOL
16. Jammu & Kashmir	ISOL	DRY	DRY	DRY	ISOL
17. West Rajasthan	DRY	DRY	DRY	ISOL	ISOL
18. East Rajasthan	DRY	DRY	DRY	DRY	ISOL
19. West Madhya Pradesh	DRY	DRY	DRY	DRY	ISOL
20. East Madhya Pradesh	DRY	DRY	DRY	DRY	DRY
21. Gujarat Region	DRY	DRY	DRY	DRY	DRY
22. Saurashtra & Kutch	DRY	DRY	DRY	ISOL	ISOL
23. Konkan & Goa	DRY	DRY	DRY	DRY	DRY
24. Madhya Maharashtra	DRY	DRY	DRY	DRY	DRY
25. Marathwada	DRY	DRY	DRY	DRY	DRY
26. Vidharbha	DRY	DRY	DRY	DRY	DRY
27. Chhattisgarh	DRY	DRY	DRY	DRY	DRY
28. Coastal Andhra Pradesh	DRY	DRY	DRY	DRY	DRY
29. Telangana	DRY	DRY	DRY	DRY	DRY
30. Rayalaseema	DRY	DRY	DRY	DRY	DRY
31. Tamilnadu & Puducherry	DRY	DRY	DRY	DRY	DRY
32. Coastal Karnataka	DRY	DRY	DRY	DRY	DRY
33. North Interior Karnataka	DRY	DRY	DRY	DRY	DRY
34. South Interior Karnataka	DRY	DRY	DRY	DRY	DRY
35. Kerala	DRY	DRY	DRY	DRY	DRY
36. Lakshadweep	DRY	DRY	DRY	DRY	DRY

% Station Reporting Rainfall

% Stations	Category	% Stations	Category
76-100	Widespread (WS/ Most Places)	26-50	Scattered (SCT/ A Few Places)
51-75	Fairly Widespread (FWS/ Many Places)	1-25	Isolated (ISOL)
No Rain	Dry		

Weather Warning during next 5 days

- **19 January (Day 1):** Dense to very dense fog very likely at many places over Bihar and Sub-Himalayan West Bengal; at a few places over East Uttar Pradesh and at isolated places over Nagaland, Manipur, Mizoram & Tripura and dense fog at isolated places over Assam & Meghalaya. Cold Day to severe cold day conditions at a few places very likely over Bihar and Cold day at isolated places over East Uttar Pradesh. Cold wave at Punjab, Uttarakhand, East Uttar Pradesh, Odisha and Bihar. Ground frost conditions very likely at a few places over Jammu & Kashmir, Himachal Pradesh and Uttarakhand and at isolated places over Punjab. Strong north-northeasterly winds speed reaching 45-55 kmph are likely to prevail over Comorin area. Fishermen off south Tamilnadu coast are advised to be cautious while venturing into the Sea over Comorin area.
- **20 January (Day 2):** Dense to very dense fog very likely at many places over Bihar and Sub-Himalayan West Bengal; at a few places over East Uttar Pradesh; at isolated places over West Uttar Pradesh and dense fog at isolated places over Punjab, Haryana, Chandigarh & Delhi, Assam & Meghalaya, Nagaland, Manipur, Mizoram & Tripura. Cold Day to severe cold day conditions at a few places very likely over Bihar. Cold wave conditions very likely at isolated places over Punjab, Uttarakhand, East Uttar Pradesh, Odisha and Bihar. Ground frost conditions very likely at isolated places over Jammu & Kashmir, Himachal Pradesh, Uttarakhand and Punjab.
- **21 January (Day 3):** Dense to very dense fog very likely at a few places over Bihar, Sub-Himalayan West Bengal and East Uttar Pradesh: at isolated places over West Uttar Pradesh and dense fog at isolated places over Punjab, Haryana, Chandigarh & Delhi, Assam & Meghalaya, Nagaland, Manipur, Mizoram & Tripura. Cold Day to severe cold day conditions at a few places very likely over Bihar. Cold wave conditions very likely at isolated places Odisha and Bihar.
- **22 January (Day 4):** Dense to very dense fog likely at a few places over Bihar, Sub-Himalayan West Bengal and East Uttar Pradesh and dense fog at isolated places over Assam & Meghalaya, Nagaland, Manipur, Mizoram & Tripura. Cold Day to severe cold day conditions at a few places likely over Bihar.
- **23 January (Day 5):** Hailstorm at isolated places likely over West Uttar Pradesh, Uttarakhand, Haryana, Chandigarh, Punjab, Himachal Pradesh and Jammu & Division. Dense to very dense fog likely at a few places over Bihar, Sub-Himalayan West Bengal and East Uttar Pradesh and dense fog at isolated places over Assam & Meghalaya, Nagaland, Manipur, Mizoram & Tripura. Cold Day to severe cold day conditions at a few places very likely over Bihar.

Weather Outlook for subsequent 2 days from 24th to 26th January 2018

- Rain/snow at isolated places likely over Jammu & Kashmir and rainfall at isolated to a few places over northeast India and Andaman & Nicobar Islands.
- Weather likely to be dry over remaining parts of the country.

Executive Summary

- As strong north northeasterly wind speed reaching 45-55 kmph are likely to prevail over Comorin area. Fishermen off **south Tamilnadu coast** are advised to be cautious while venturing into the Sea over Comorin area.
- As cold wave condition very likely at isolated places over **Odisha and Bihar** from 19th to 21st January, over **Uttarakhand, Punjab and East Utttar Pradesh** on 19th and 20th January, apply light and frequent irrigation/sprinkler irrigation in the evening to protect the crops from cold injury. To protect young fruit plants from chilly winds, cover young fruit plants with straw/polythene sheets/gunny bags. Cover the nursery bed with FYM & paddy straw/banana leaves after sowing. Irrigate the rice nursery beds every day in the evening and let out the water in the morning.
- As ground frost conditions very likely at a few/isolated places over **Jammu & Kashmir, Himachal Pradesh, Uttarakhand and Punjab** on 19th and 20th January, apply light and frequent irrigation in standing crops during evening hours and in cash crops, spray of 0.1 percent H₂SO₄ to protect from frost injury.

- As dense to very dense fog at many/at a few places very likely over **East Uttar Pradesh, Bihar and Sub-Himalayan West Bengal** and dense fog at isolated places over **Assam & Meghalaya and Nagaland, Manipur, Mizoram & Tripura** during the period, over **West Uttar Pradesh, Punjab, Haryana, Chandigarh & Delhi** on 20th and 21st January, monitor the standing crops for incidence and spread of pest diseases, potato, tomato and onion crops for early/late blight disease. If symptoms are noticed, undertake plant protection measures.
- As dry weather would prevail, undertake harvesting of matured toria in **Jharkhand**, pigeon pea in **North Inerior Karnataka** and **Odisha** and Castor in south **Sourashtra** and **North Gujarat Zone**.
- In North East Alluvial Zone of **Bihar**, in the prevailing foggy weather, infection of blight may occur in potato. If symptoms appear then spray Carbandizam @ 1 gm/litre of water or Dithane-M-45 @ 2 gm/litre of water for control .
- In Undulating Plain Zone of **Punjab**, in the prevailing weather, monitor the wheat crop for incidence of yellow rust. If symptoms are noticed, spray Native 120g or Tilt 200ml per litre of water for control.
- In view of the cold wave conditions in **Odisha, Bihar, Uttarakhand, East Uttar Pradesh** and **Punjab**, keep animals inside the sheds during night hours and provide dry bedding to protect them from cold. Animals should be given mineral mixture along with salt regularly and wheat grains, jaggery etc. may be provided @ 10%-20% in the daily ration during winter season to meet the energy requirement of the animals, 10% extra dry matter should be provided over and above the total requirement to fulfill the extra energy requirement in winter. In Poultry, keep the chicks warm by providing artificial light in the poultry sheds.

- Weather forecast issued by NWFC, New Delhi and Agromet Advisories prepared based on the DAAS Bulletins issued by different Agrometeorological Field Units are included in this bulletin.