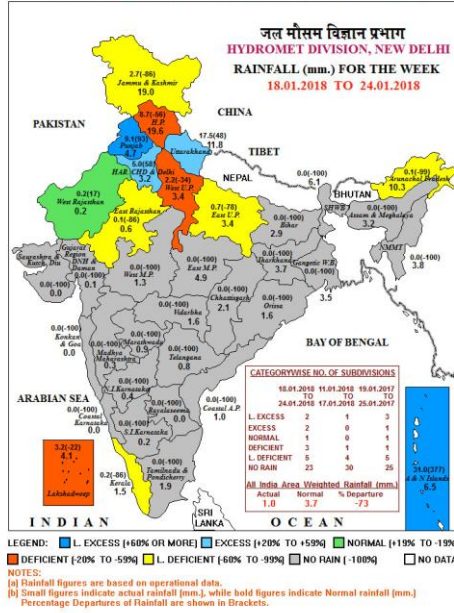


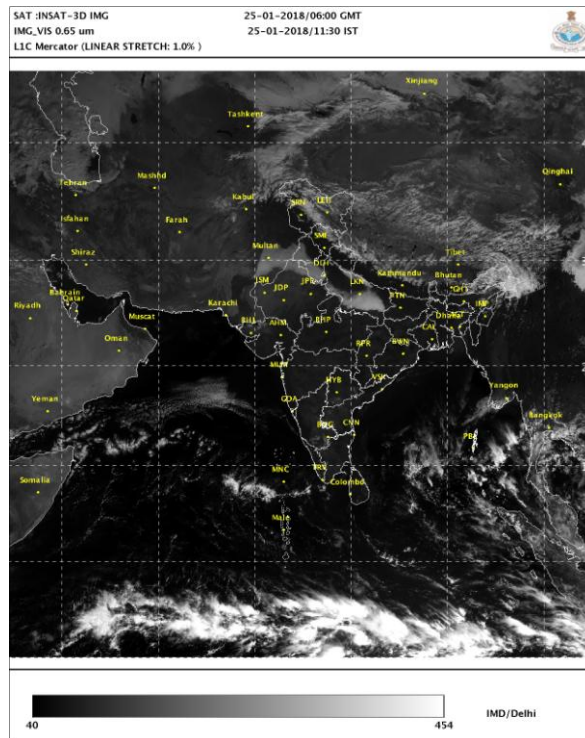
Rainfall map for the week ending 24.01.2018

भारत मौसम विज्ञान विभाग  
INDIA METEOROLOGICAL DEPARTMENT



- ◆ **Large Excess Rain:** Punjab and Andaman & Nicobar Islands
- ◆ **Excess Rain:** Uttarakhand, Haryana, Chandigarh and Delhi
- ◆ **Normal Rain:** West Rajasthan
- ◆ **Rainfall was Deficient / Low Deficient / Dry:** Rest of the country

Satellite image 0600 UTC Dated 25.01.2018



## Weather Forecast for next 5 days valid upto 0830 hours of 30<sup>th</sup> January, 2018

- Meteorological subdivision wise detailed 5 days rainfall forecast is given in Table below.
- Minimum temperatures likely to fall by 1-2°C over Central & East India. No significant change in minimum temperatures likely over northwest India and western parts of Peninsular India during next 3 days. They are likely to rise by 2-3°C over northwest India thereafter.
- Rise in maximum temperatures very likely by 2-3°C during next 24 hours over parts of northwest India.
- Shallow to moderate fog very likely at isolated places over Assam & Meghalaya and Nagaland, Manipur, Mizoram & Tripura during next 2 days.

### 5 Day Rainfall Forecast (Mid day) 25<sup>th</sup> January, 2018

Met-Sub-Division	25-Jan Today	26Jan Fri	27Jan Sat	28Jan Sun	29Jan Mon
1. Andaman & Nicobar Islands	FWS	SCT	SCT	ISOL	ISOL
2. Arunachal Pradesh	FWS	SCT	ISOL	ISOL	DRY
3. Assam & Meghalaya	ISOL	DRY	DRY	DRY	DRY
4. N. M. M. & T.	ISOL	DRY	DRY	DRY	DRY
5. S.H. West Bengal & Sikkim	DRY	DRY	DRY	DRY	DRY
6. Gangetic West Bengal	DRY	DRY	DRY	DRY	DRY
7. Odisha	DRY	DRY	DRY	DRY	DRY
8. Jharkhand	DRY	DRY	DRY	DRY	DRY
9. Bihar	DRY	DRY	DRY	DRY	DRY
10. East Uttar Pradesh	DRY	DRY	DRY	DRY	DRY
11. West Uttar Pradesh	DRY	DRY	DRY	DRY	DRY
12. Uttarakhand	DRY	DRY	DRY	DRY	DRY
13. Haryana, Chd & Delhi	DRY	DRY	DRY	DRY	DRY
14. Punjab	DRY	DRY	DRY	DRY	DRY
15. Himachal Pradesh	DRY	DRY	DRY	DRY	ISOL
16. Jammu & Kashmir	ISOL	ISOL	ISOL	ISOL	SCT
17. West Rajasthan	DRY	DRY	DRY	DRY	DRY
18. East Rajasthan	DRY	DRY	DRY	DRY	DRY
19. West Madhya Pradesh	DRY	DRY	DRY	DRY	DRY
20. East Madhya Pradesh	DRY	DRY	DRY	DRY	DRY
21. Gujarat Region	DRY	DRY	DRY	DRY	DRY
22. Saurashtra & Kutch	DRY	DRY	DRY	DRY	DRY
23. Konkan & Goa	DRY	DRY	DRY	DRY	DRY
24. Madhya Maharashtra	DRY	DRY	DRY	DRY	DRY
25. Marathwada	DRY	DRY	DRY	DRY	DRY
26. Vidharbha	DRY	DRY	DRY	DRY	DRY
27. Chhattisgarh	DRY	DRY	DRY	DRY	DRY
28. Coastal Andhra Pradesh	DRY	DRY	DRY	DRY	DRY
29. Telangana	DRY	DRY	DRY	DRY	DRY
30. Rayalaseema	DRY	DRY	DRY	DRY	DRY
31. Tamilnadu & Puducherry	ISOL	DRY	DRY	DRY	DRY
32. Coastal Karnataka	DRY	DRY	DRY	DRY	DRY
33. North Interior Karnataka	DRY	DRY	DRY	DRY	DRY
34. South Interior Karnataka	DRY	DRY	DRY	DRY	DRY
35. Kerala	ISOL	DRY	DRY	DRY	DRY
36. Lakshadweep	ISOL	ISOL	ISOL	DRY	DRY

#### % Station Reporting Rainfall

% Stations	Category	% Stations	Category
76-100	Widespread (WS/ Most Places)	26-50	Scattered (SCT/ A Few Places)
51-75	Fairly Widespread (FWS/ Many Places)	1-25	Isolated (ISOL)
No Rain	Dry		

### Weather Warning during next 5 days

- **25 January (Day 1):** Dense to very dense fog very likely at a few places Punjab, Haryana, Chandigarh & Delhi, Uttar Pradesh, Bihar, Sub-Himalayan West Bengal and at isolated places over north Rajasthan and lower reaches of Himachal

Pradesh & Uttarakhand. Cold Wave conditions very likely at isolated places over Uttarakhand, Himachal Pradesh, Punjab, Haryana, Chandigarh, North Rajasthan and Madhya Pradesh. Ground frost conditions very likely at isolated places over Jammu & Kashmir, Himachal Pradesh, Uttarakhand, north Rajasthan, Punjab, Haryana and Chandigarh.

- **26 January (Day 2):** Dense to very dense fog very likely at a few places East Uttar Pradesh, Bihar and Sub-Himalayan West Bengal and at isolated places over north Rajasthan, Punjab, Haryana, Chandigarh & Delhi, West Uttar Pradesh and lower reaches of Himachal Pradesh & Uttarakhand. Cold Wave conditions very likely at isolated places over Uttarakhand, Himachal Pradesh, Punjab, Haryana, Chandigarh, north Rajasthan and Madhya Pradesh. Ground frost conditions very likely at isolated places over Jammu & Kashmir, Himachal Pradesh, Uttarakhand, north Rajasthan, Punjab, Haryana and Chandigarh.
- **27 January (Day 3):** Dense to very dense fog very likely at a few places East Uttar Pradesh, Bihar and Sub-Himalayan West Bengal and at isolated places over Punjab, Haryana, Chandigarh & Delhi, West Uttar Pradesh; Dense fog very likely at isolated places over lower reaches of Himachal Pradesh & Uttarakhand. Cold Wave conditions very likely at isolated places over Uttarakhand, Himachal Pradesh, Punjab, Haryana, Chandigarh and north Rajasthan and Madhya Pradesh. Ground frost conditions very likely at isolated places over Jammu & Kashmir, Himachal Pradesh, Uttarakhand, north Rajasthan, Punjab, Haryana and Chandigarh.
- **28 January (Day 4):** Dense fog likely at isolated places over East Uttar Pradesh.
- **29 January (Day 5):** No weather warning.

#### **Weather Outlook for subsequent 2 days from 30<sup>th</sup> January to 1<sup>st</sup> February 2018**

- Scattered to fairly widespread rain/snow likely over Jammu & Kashmir and isolated over Himachal Pradesh.
- Weather likely to be dry over remaining parts of the country outside Andaman & Nicobar Islands, where isolated rainfall likely.

#### **Executive Summary**

- As cold wave conditions very likely at isolated places over **Uttarakhand, Himachal Pradesh, Punjab, Haryana, Chandigarh, north Rajasthan and Madhya Pradesh** from 25<sup>th</sup> to 27<sup>th</sup> January, apply light and frequent irrigation/sprinkler irrigation in the evening to protect the crops from cold injury. To protect young fruit plants from chilly winds, cover young fruit plants with straw/polythene sheets/gunny bags. Irrigate the rice nursery beds every day in the evening and let out the water in the morning.
- As ground frost conditions very likely at isolated places over **Jammu & Kashmir, Himachal Pradesh, Uttarakhand, north Rajasthan, Punjab, Haryana and Chandigarh** from 25<sup>th</sup> to 27<sup>th</sup> January, apply light and frequent irrigation in standing crops during evening hours and in cash crops, spray of 0.1 percent H<sub>2</sub>SO<sub>4</sub> to protect from frost injury.
- As dense to very dense fog at a few places very likely over **Bihar and Sub-Himalayan West Bengal** from 25<sup>th</sup> to 27<sup>th</sup>, over **Punjab, Haryana, Chandigarh & Delhi** and **Uttar Pradesh** on 25<sup>th</sup>, over **East Uttar Pradesh** on 26<sup>th</sup> and 27<sup>th</sup>, dense to very dense/dense fog at isolated places over **north Rajasthan** and lower reaches of **Himachal Pradesh & Uttarakhand** from 25<sup>th</sup> to 27<sup>th</sup>, over **Punjab, Haryana, Chandigarh & Delhi, West Uttar Pradesh** on 26<sup>th</sup> and 27<sup>th</sup> and over **East Uttar Pradesh** on 28<sup>th</sup> January, monitor the standing crops for incidence/spread of pest and diseases, potato, tomato and onion crops for early/late blight disease. If symptoms are noticed, undertake plant protection measures.
- As rain/thundershowers likely at many places over **Andaman & Nicobar Islands** and **Arunachal Pradesh** on 25<sup>th</sup> January, avoid irrigation, intercultural operation and application of plant protection measures and

fertilizers to the standing crops.

- As dry weather would prevail, continue harvesting of matured toria in **Jharkhand**, pigeon pea in **North Interior Karnataka** and **Odisha** and Castor in south **Saurashtra** and **North Gujarat Zone**.
  - In South Eastern Plateau Zone of **Jharkhand**, mustard crops are at capsule formation stage and because of cool, humid weather during morning hours and later on clear sunny weather favours for the attack of aphid and also being seen in some areas. Hence, integrated aphid management practice should be followed by plucking and destroying the infested twigs from the border rows 2-3 times at 10-day intervals and to prevent the further multiplication in the crop season. In case of more damages spraying of Methyl Demeton or rogar (Dimethoate) @ 1ml per liter mixed with Teepol @ 5 ml per liter is recommended.
  - In view of the cold wave conditions in **Uttarakhand, Himachal Pradesh, Punjab, Haryana, Chandigarh, north Rajasthan** and **Madhya Pradesh** from 25<sup>th</sup> to 27<sup>th</sup> January, keep animals inside the sheds during night hours and provide dry bedding to protect them from cold. Animals should be given mineral mixture along with salt regularly and wheat grains, jaggery etc. may be provided @ 10%-20% in the daily ration during winter season to meet the energy requirement of the animals, 10% extra dry matter should be provided over and above the total requirement to fulfill the extra energy requirement in winter. In Poultry, keep the chicks warm by providing artificial light in the poultry sheds.
- Weather forecast issued by NWFC, New Delhi and Agromet Advisories prepared based on the DAAS Bulletins issued by different Agrometeorological Field Units are included in this bulletin.