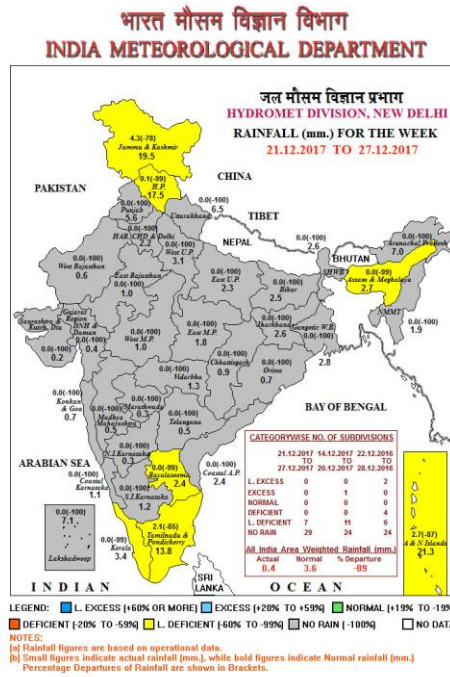


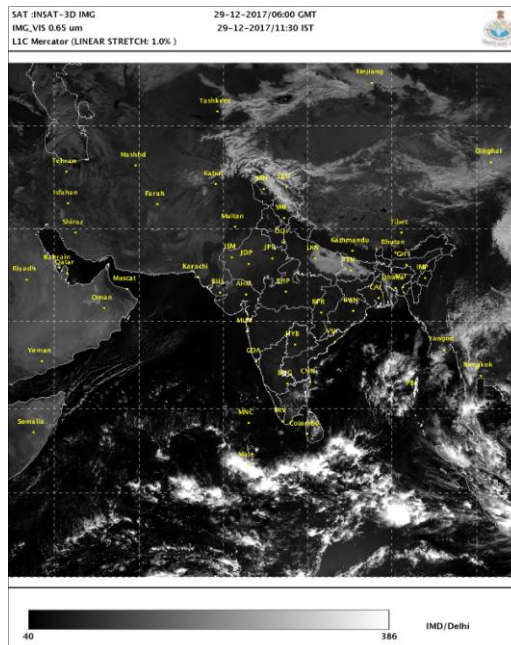
Inputs for Krishi Darshan, New Delhi dated 29.12.2017

Rainfall map for the week ending 27.12.2017



- ◆ Large Excess Rain: Nil.
- ◆ Excess Rain: NIL
- ◆ Normal Rain: Nil.
- ◆ Rainfall was Low Deficient / Dry: Over the entire country.

Satellite image 0600 UTC Dated 29.12.2017



Weather Forecast for next 5 days valid upto 0830 hours of 3rd January, 2018

- Meteorological subdivision wise detailed 5 days rainfall forecast is given in Table below.
- Minimum temperatures are likely to fall by 1-2°C over planes of northwest India leading to cold wave conditions over Punjab, Haryana, Chandigarh & Delhi and north Rajasthan during next 48 hours. There is no significant change in minimum temperature likely over rest parts of the country during next 2 days.
- Shallow to moderate fog very likely at a few places over Arunachal Pradesh during next 3 days.
- High swell waves in the range of 3.0-3.3 M along coast of Kerala during next 48 hours; 2.5-2.9 M along coast of Lakshadweep Island during next 24 hours; 2.5-2.6 M along coast of south Tamilnadu during next 24 hours; 2.0-2.3 M along coast of Karnataka during next 24 hours; 2.0-2.2 M along coast of Maharashtra during next 48 hours; 2.0-2.2 M along coast of Gujarat during next 24 hours; 2.0-2.1 M along coast of Goa during next 24 hours. Fishermen are advised to be cautious while venturing into the sea along these coasts during the above period.

5 Day Rainfall Forecast (Mid day) 29th December 2017

| Met-Sub-Division | 29-Dec Today | 30Dec Sat | 31Dec Sun | 01Jan Mon | 02Jan Tue |
|------------------------------|-----------------|--------------|--------------|--------------|--------------|
| 1. Andaman & Nicobar Islands | FWS | FWS | WS | WS | WS |
| 2. Arunachal Pradesh | DRY | DRY | DRY | DRY | DRY |
| 3. Assam & Meghalaya | DRY | DRY | DRY | DRY | DRY |
| 4. N. M. M. & T. | DRY | DRY | DRY | DRY | ISOL |
| 5. S.H. West Bengal & Sikkim | DRY | DRY | DRY | DRY | DRY |
| 6. Gangetic West Bengal | DRY | DRY | DRY | DRY | DRY |
| 7. Odisha | DRY | DRY | DRY | DRY | DRY |
| 8. Jharkhand | DRY | DRY | DRY | DRY | DRY |
| 9. Bihar | DRY | DRY | DRY | DRY | DRY |
| 10. East Uttar Pradesh | DRY | DRY | DRY | DRY | DRY |
| 11. West Uttar Pradesh | DRY | DRY | DRY | DRY | DRY |
| 12. Uttarakhand | DRY | DRY | DRY | DRY | DRY |
| 13. Haryana, Chd & Delhi | DRY | DRY | DRY | DRY | DRY |
| 14. Punjab | DRY | DRY | DRY | DRY | DRY |
| 15. Himachal Pradesh | DRY | DRY | DRY | DRY | DRY |
| 16. Jammu & Kashmir | ISOL | DRY | DRY | DRY | DRY |
| 17. West Rajasthan | DRY | DRY | DRY | DRY | DRY |
| 18. East Rajasthan | DRY | DRY | DRY | DRY | DRY |
| 19. West Madhya Pradesh | DRY | DRY | DRY | DRY | DRY |
| 20. East Madhya Pradesh | DRY | DRY | DRY | DRY | DRY |
| 21. Gujarat Region | DRY | DRY | DRY | DRY | DRY |
| 22. Saurashtra & Kutch | DRY | DRY | DRY | DRY | DRY |
| 23. Konkan & Goa | DRY | DRY | DRY | DRY | DRY |
| 24. Madhya Maharashtra | DRY | DRY | DRY | DRY | DRY |
| 25. Marathwada | DRY | DRY | DRY | DRY | DRY |
| 26. Vidharbha | DRY | DRY | DRY | DRY | DRY |
| 27. Chhattisgarh | DRY | DRY | DRY | DRY | DRY |
| 28. Coastal Andhra Pradesh | DRY | DRY | DRY | DRY | DRY |
| 29. Telangana | DRY | DRY | DRY | DRY | DRY |
| 30. Rayalaseema | DRY | DRY | DRY | DRY | DRY |
| 31. Tamilnadu & Puducherry | DRY | DRY | DRY | DRY | DRY |
| 32. Coastal Karnataka | DRY | DRY | DRY | DRY | DRY |
| 33. North Interior Karnataka | DRY | DRY | DRY | DRY | DRY |
| 34. South Interior Karnataka | DRY | DRY | DRY | DRY | DRY |
| 35. Kerala | DRY | DRY | DRY | DRY | DRY |
| 36. Lakshadweep | DRY | DRY | DRY | DRY | DRY |

% Station Reporting Rainfall

| % Stations | Category | % Stations | Category |
|------------|--------------------------------------|------------|-------------------------------|
| 76-100 | Widespread (WS/Most Places) | 26-50 | Scattered (SCT/ A Few Places) |
| 51-75 | Fairly Widespread (FWS/ Many Places) | 1-25 | Isolated (ISOL) |
| No Rain | Dry | | |

Weather Warning during next 5 days

- **29 December (Day 1): Dense fog** at a few places with **very dense fog** at isolated places very likely over East Uttar Pradesh & Bihar. **Dense to very dense fog** very likely at isolated places over Punjab & West Uttar Pradesh; **dense fog** at isolated places over Haryana, Chandigarh & Delhi. **Moderate to dense fog** very likely at isolated places over West Bengal, Assam & Meghalaya and Nagaland, Manipur, Mizoram & Tripura; **shallow to moderate fog** at isolated places over Arunachal Pradesh. **Cold wave** conditions very likely at isolated places over Punjab, Haryana, Chandigarh & Delhi, north Rajasthan, East Madhya Pradesh, Vidarbha, Chhattisgarh & Odisha. **Cold day** conditions very likely at a few places over East Uttar Pradesh; at isolated places over Bihar.
- **30 December (Day 2): Dense fog** at a few places with **very dense fog** at isolated places very likely over East Uttar Pradesh & Bihar. **Dense to very dense fog** very likely at isolated places over Punjab, West Uttar Pradesh and Haryana, Chandigarh & Delhi. **Moderate to dense fog** very likely at isolated places over West Bengal & Sikkim, Assam & Meghalaya and Nagaland, Manipur, Mizoram & Tripura; **shallow to moderate fog** at isolated places over Arunachal Pradesh. **Cold wave** conditions very likely at isolated places over Punjab, Haryana, Chandigarh & Delhi, north Rajasthan, East Madhya Pradesh, Vidarbha, Chhattisgarh and Odisha. **Cold day** conditions very likely at a few places over East Uttar Pradesh; at isolated places over Bihar.
- **31 December (Day 3): Dense fog** at a few places with **very dense fog** at isolated places very likely over East Uttar Pradesh & Bihar. **Dense to very dense fog** very likely at isolated places over Punjab & West Uttar Pradesh; **dense fog** at isolated places over Haryana, Chandigarh & Delhi. **Moderate to dense fog** very likely at isolated places over Sub Himalayan West Bengal, Assam & Meghalaya and Nagaland, Manipur, Mizoram & Tripura; **shallow to moderate fog** at isolated places over Arunachal Pradesh. **Cold day** conditions very likely at isolated places over East Uttar Pradesh & Bihar. **Heavy rain** very likely at isolated places over Andaman & Nicobar Islands.
- **01 January (Day 4): Heavy rain** very likely at isolated places over Andaman & Nicobar Islands.
- **02 January (Day 5): No weather warning.**

Weather Outlook for subsequent 2 days from 03rd to 05th January, 2018

- Rainfall at many places very likely over Andaman & Nicobar Islands and at isolated places over northeastern states.
- Rain/snowfall at isolated places likely over western Himalayan region.
- Weather likely to be dry over remaining parts of the country.

Executive Summary

- As high swell waves in the range of 3.0-3.3 M along coast of **Kerala** during next 48 hours; 2.5-2.9 M along coast of **Lakshadweep Island** during next 24 hours; 2.5-2.6 M along coast of **south Tamilnadu** during next 24 hours; 2.0-2.3 M along coast of **Karnataka** during next 24 hours; 2.0-2.2 M along coast of **Maharashtra** during next 48 hours; 2.0-2.2 M along coast of **Gujarat** during next 24 hours; 2.0-2.1 M along coast of **Goa** during next 24 hours. Fishermen are advised to be cautious while venturing into the sea along these coasts during the above period.
- As cold wave conditions very likely at isolated places over **Punjab, Haryana, Chandigarh & Delhi, north Rajasthan, Vidarbha, Odisha, East Madhya Pradesh** and **Chhattisgarh** on 29th and 30th December, apply light and frequent irrigation /sprinkler irrigation in the evening to protect the crops from cold injury. To protect young fruit plants from chilly winds, cover young fruit plants with straw/polythene sheets/gunny bags.

- As rainfall is very likely at most/many places over **Andaman & Nicobar Islands** on 29th Dec. to 2nd January, along with heavy rain at isolated places very likely on 31st December & 1st January , avoid intercultural operation and application of plant protection measures and fertilizers to the standing crops.
- As dense fog at a few places with very dense fog at isolated places very likely over **Bihar and East Uttar Pradesh** from 29th to 31st, dense to very dense fog very likely at isolated places over **Punjab & West Uttar Pradesh** and dense fog at isolated places over **Haryana, Chandigarh & Delhi** from 29th to 31st December moderate to dense fog very likely at isolated places over **West Bengal & Sikkim** from 29th to 31st December, moderate to dense fog very likely at isolated places over **Assam & Meghalaya and Nagaland, Manipur, Mizoram & Tripura**; shallow to moderate fog at isolated places over **Arunachal Pradesh** from 29th to 31st December, , monitor the standing crops for incidence and spread of pest diseases, tomato and onion crops for early/late blight disease. If symptoms are noticed, undertake plant protection measures.
- As dry weather is prevailing, apply irrigation in wheat at CRI stage in Saurashtra, in middle Gujarat, Central Plain Zone of Uttar Pradesh, West Madhya Pradesh and in North Central Plateau Zone and Western Undulating Zone of Odisha.
- In Western Plain Zone of **Punjab**, in the prevailing weather, there are chances of late blight in potato, if symptoms appear, spray the crop with Indofil M-45/Markzeb/Kavach @ 500-700 g in 250-350 litres of water per acre.
- In the Hill Zone of **Assam**, foggy weather may cause blight disease in tomato. Alternate application of Ridomil MZ-72 (2g/ lit) and Indofil M-45 2.5g / lit at 15 days interval can prevent the disease. Keeping in view of high relative humidity, farmers are advised to do monitoring of late blight in potato & advised to spray Dithane-M-45@ 2g/lit of water.
- In view of the cold wave conditions in **Punjab, Haryana, Chandigarh & Delhi, north Rajasthan, Vidarbha, Odisha, East Madhya Pradesh and Chhattisgarh** on 29th and 30th December, keep animals inside the sheds during night and provide dry bedding to protect them from cold. Increase protein level and minerals in the feed concentrate to keep the animals healthy to cope up with the cold condition. In Poultry, keep the chicks warm by providing artificial light in the poultry sheds.

- Weather forecast issued by NWFC, New Delhi and Agromet Advisories prepared based on the DAAS Bulletins issued by different Agrometeorological Field Units are included in this bulletin.